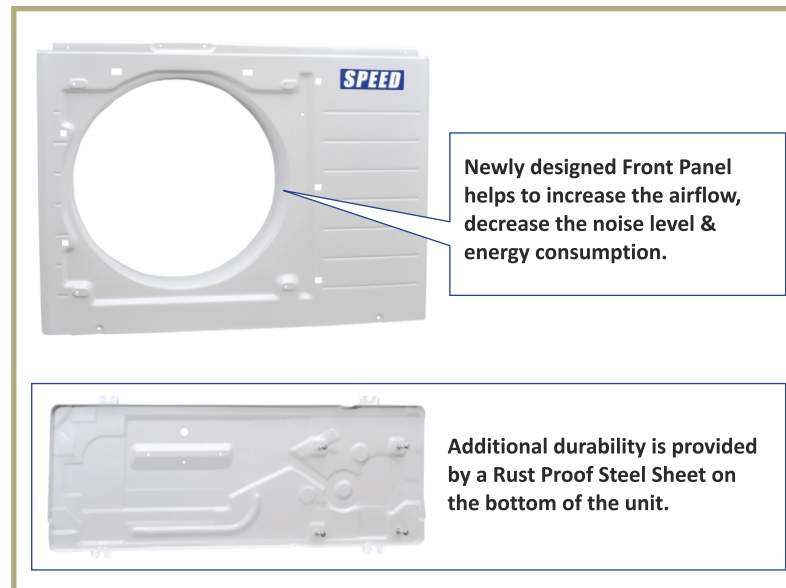


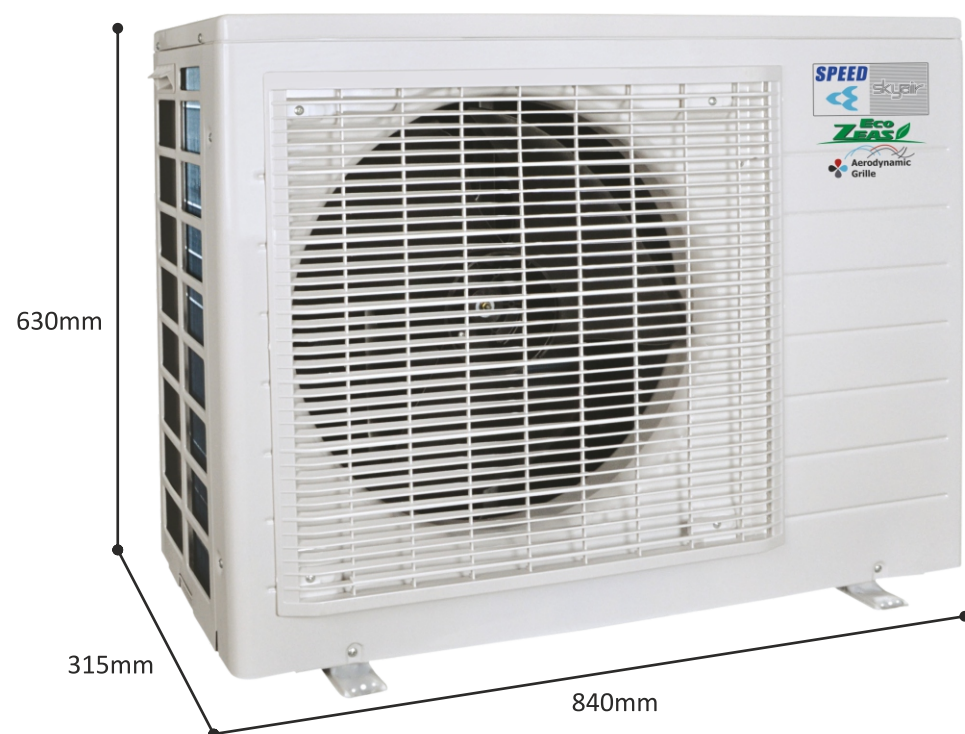
## Sheet Metal Parts

The body is galvanised giving reliable protection against rust on sheet metal parts with fully processed powder coated so result is strength and durability. All steel fabricated panels have been developed with the very latest technology and specific requirements. A superb body with innovative design is developed specifically to reduce power management systems includes dynamic performance.



## Outdoor Unit

The new outdoor unit has the latest design of engineering and manufacturing techniques, as well as the use of technologically advanced materials and components. The new outdoor unit offers optimum performance combined with premium refinement and significant reductions in noise and vibration. We have made stringent effort to provide reliable and genuine World Class Out Door Unit. You can feel the difference. Welcome to "SPEED".!



## SPEED AIRCONDITIONERS

F-17, Udyog Nagar Industrial Area, Rohtak Road, New Delhi-110041

Ph.: 011-45657475

E-mail: speedairconditioners@gmail.com

# SPEED

2020 / 2021  
Advanced Technology  
High Energy Saving  
Quiet Operation

Unbeatable Performance.....

**New**

Super Quiet Design



## World's first aerodynamic grille

The newly designed aerodynamic grille adjusts the airflow angle and sends air further. The new shape of Grid produces low noise and high air flow rate.

**aerodynamic Grille**

**Cool, Stylish and Energy-saving Outdoor Unit**

# Speed

## Exclusive Features

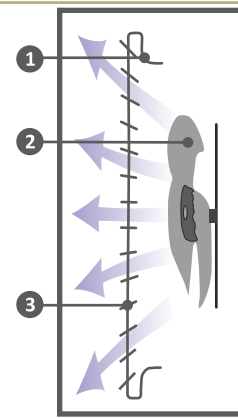
### aerodynamic Grille

Only aerodynamic Grille gives comfortable air delivery and noise reduction technology. The grille has a distinctive wave shape, developed using hydrodynamic analysis. The shape of Grid is made according to the angle of the fan so aerodynamic Grille delivers a smooth turbulence free air flow. The result is more air with less noise and low power consumption.

#### The Sophisticated Air Path Design – Key to Compact Size.

These three improvements minimise the air resistance.

- 1 Improved front grille opening shape
- 2 New Large Diagonal Air Flow Fan The newly designed fan blades reduce the frontal discharge distance.
- 3 Improved front grille grid shape

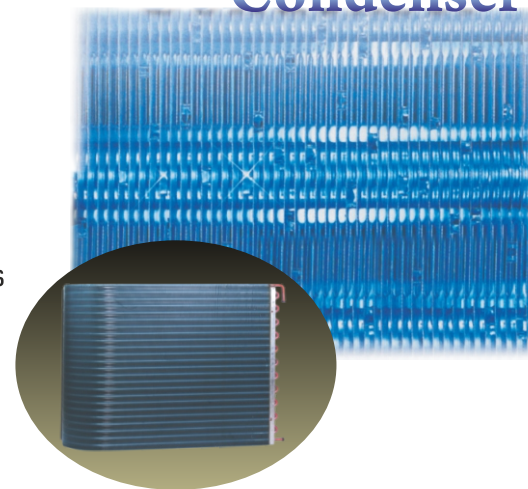


### Blue Fin Condenser

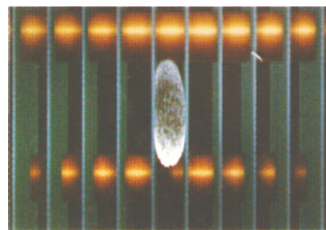
#### Last 3 Times Longer

An Air Conditioner's performance depends largely on its condenser, which can take a beating from exposure to salty air, wind, dust and other corrosive factors. SPEED has found a way to triple the life of our condensers, using a layer of our original anti-rust coating. This special coating lets you enjoy more years of reliable comfort plus extra economy over the long run. The outdoor unit's heat exchanger fins are processed using a special anti-corrosion treatment. The surface is covered with a thin acrylic resin layer to enhance the fins' resistance to acid rain and salt corrosion. A Hydrophobic Film layer also prevent Rust caused by the run of water droplets.

### Blue Fin Condenser

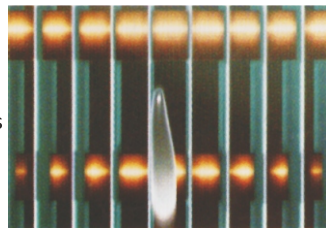


#### Non Blue fin

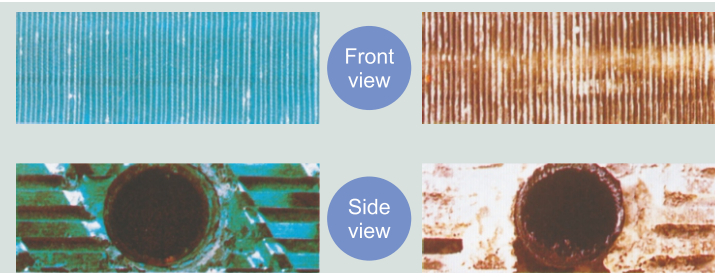


#### Hydrophilic Blue fin

A hydrophilic film layer also prevents rust caused by the run off of water droplets.



#### Cyclic Corrosion Test Result

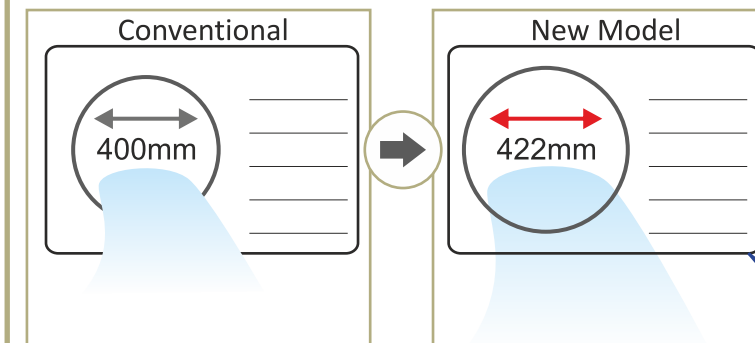


#### Test Proven – Durability that lasts 3 times longer

SPEED's condenser has 3 times higher resistance against corrosion. This special coating assures longer condenser live for years of reliable comfort.

### Powerful Airflow with a Winglet Flow Fan

SPEED's new models feature a Winglet flow fan with improved design. The fan's larger diameter dramatically increases airflow. The newly developed Fan and original bellmouth construction enable operation with high static pressure and low consumption. The newly developed three dimensional blade shape stabilises the air flow.



Thanks to the large fan and improved fan circuitry airflow is larger than before.

#### Noise-Suppressing Winglet Fan



#### Quiet, Efficient Design

A host of silencing technologies achieves super-quiet operation. We've also improved operating efficiency and reduce energy consumption.

Airflow **15%\*** up compare to old model

### ODU Fan Motor

ODU Fan Motor is for move efficient than the conventional motor. The powerful motor allows smooth starting at extremely low voltage condition. And it can be operative under much voltage fluctuation.

- More Powerful Motor with Long Life
- Outstanding Energy Saving
- Reduce Noise Level.
- Reduce Connected Load.



### Connector : Secure Connection for Ultimate Protection

More interesting and more secure connector is introduced in the new outdoor unit. The special material used is 30% glass field with FR grade. While assembling the cable with the connector no single wire is cut as we are clamping the wire below the square washer and not tightening the wire with the screw.

- Compact
- Rugged
- Light Weight

